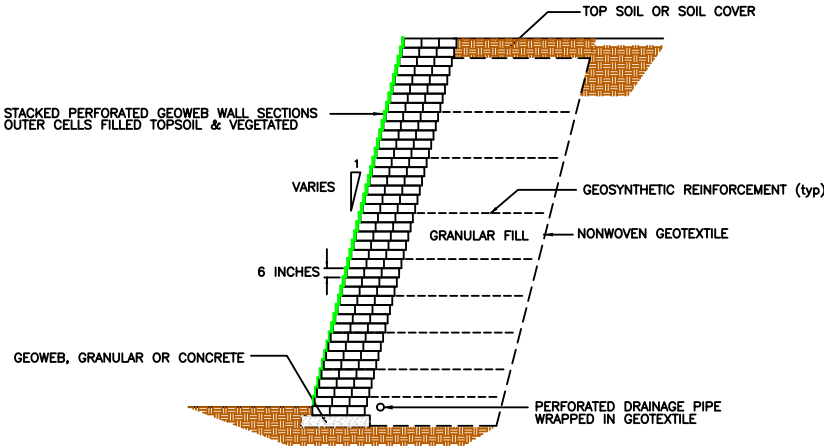


NOTES:

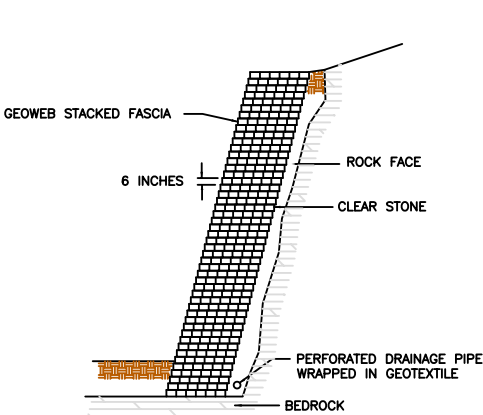
- EXCAVATE AND SHAPE FOUNDATION SOILS TO THE GRADES, ELEVATIONS AND DIMENSIONS SHOWN ON THE CONSTRUCTION DRAWINGS.
- VERIFY THAT THE FOUNDATION SOIL SATISFIES THE DESIGN STRENGTH REQUIREMENTS. IF UNACCEPTABLE SOILS ARE ENCOUNTERED, THEY SHALL BE REMOVED AND REPLACED WITH ENGINEERED FILL AS DIRECTED BY THE PROJECT ENGINEER.
- PLACE SPECIFIED GRANULAR BASE (LEVELING PAD) MATERIALS TO THE LINES AND GRADES SHOWN ON THE CONSTRUCTION DRAWINGS AND COMPACT TO A MINIMUM 95% OF STANDARD PROCTOR DRY DENSITY (SPDD). IF SPECIFIED, EXPAND GEOWEB FOOTING SECTIONS INTO POSITION ON THE PREPARED SUBGRADE (OR BASE) AND TEMPORARILY ANCHOR AT THE CORNERS AND ALONG THE EDGES.
- OVERFILL GEOWEB CELLS WITH THE SPECIFIED GRANULAR INFILL MATERIAL. THE MAXIMUM PARTICLE SIZE OF THE INFILL MATERIAL SHALL NOT BE GREATER THAN 50 mm (2 in). COMPACT THE INFILL MATERIAL AND SURROUNDING FILL TO A MINIMUM 95% OF SPDD. REMOVE EXCESS FILL TO LEVEL WITH THE TOP OF THE CELLS.
- INSTALL PERFORATED SUBDRAIN PIPE, WRAPPED WITH THE SPECIFIED NONWOVEN GEOTEXTILE, OR BACKFILL WITH CLEAR STONE, WRAPPED IN A NONWOVEN GEOTEXTILE, ADJACENT TO THE FOOTING OR AS SHOWN ON THE CONSTRUCTION DRAWINGS. PLACE DRAINAGE SYSTEM AT A MINIMUM GRADIENT OF 1% TO THE SPECIFIED OUTLETS. CONNECT SUBDRAIN PIPES TO SPECIFIED OUTLETS WITH T-CONNECTORS. WRAP OUTLET PIPES WHICH PASS THROUGH FOOTING OR WALL SECTIONS WITH GEOTEXTILE TO PREVENT LOSS OF CELL INFILL MATERIALS. CONNECT OUTLET PIPES TO SITE DRAINAGE SYSTEM IF PRESENT, OR ENSURE THAT DISCHARGE AT OUTLETS WILL NOT CAUSE LOCALIZED EROSION. COMPACT FILL MATERIALS SURROUNDING THE DRAINAGE SYSTEM.
- WHERE SPECIFIED, PLACE GEOTEXTILE OVER THE BASE AND EXTEND UP THE FACINATION AND PIN INTO POSITION. ALLOW 300 mm (12 in) OVERLAPS AT ADJOINING SECTIONS OF GEOTEXTILE. WHERE GEODECOMPOSITE DRAINAGE MATERIALS ARE SPECIFIED, ENSURE THAT EACH STRIP IS CONTINUOUS AND FULLY ENCAPSULATED WITH A GEOTEXTILE-RESTRICTED OUTLET.
- EXPAND GEOWEB SECTIONS, DIMENSIONED ACCORDING TO THE CONSTRUCTION DRAWINGS INTO POSITION USING STRETCHER FRAMES, TEMPORARY STAKES OR OTHER SUITABLE METHOD TO TEMPORARILY HOLD IN PLACE. INTERLEAF OR OVERLAP EDGES OF ADJACENT SECTIONS IN EACH LAYER, ACCORDING TO WHICH SIDE WALL PROFILES ABUT. ENSURE THAT ALL ADJOINING SECTIONS ARE FLUSH AT THE JOINTS AND ADJOINING CELLS ARE FULLY STAPLED.
- PLACE SPECIFIED INFILL MATERIAL TO APPROXIMATELY 50 mm (2 in) ABOVE THE CELL WALLS. COMPACT INFILL AND BACKFILL MATERIALS TO A MINIMUM 95% OF SPDD AND REMOVE EXCESS MATERIAL ABOVE THE CELL WALLS. USE WALK-BEHIND COMPACTING EQUIPMENT TO COMPACT MATERIAL WITHIN THE GEOWEB SECTIONS AND WITHIN 1 m (3 ft) OF THE BACK OF GEOWEB SECTIONS.
- PLACED SUBSEQUENT LAYERS WITH THE SPECIFIED SET BACK AND ALIGN GEOWEB SECTIONS TO AVOID OVERHANGING OF UPPER SECTIONS OVER LOWER SECTIONS.
- WHERE DIFFERENT INFILL MATERIALS ARE SPECIFIED FOR THE OUTER CELLS (E.G. TOPSOIL/VEGETATED), THE FOLLOWING PROCEDURES MAY BE USED:
 - COVER OUTER CELLS WITH REMOVABLE BOARD WHILE FILLING BACK CELLS. PLACE SPECIAL INFILL IN OUTER CELLS BEFORE ADVANCING TO THE NEXT LAYER.
 - LEAVE OUTER CELLS OPEN BUT USE EXTRA CARE TO FILL BACK CELLS AND AVOID EXCESSIVE SPILLAGE INTO OUTER CELLS. WHERE THE SPECIFIED OUTER CELL INFILL AND VEGETATION WILL TOLERATE IT, SOME SPILLAGE OF GRANULAR INFILL INTO THE OUTER CELLS IS ACCEPTABLE.

REINFORCED WALL SYSTEMS

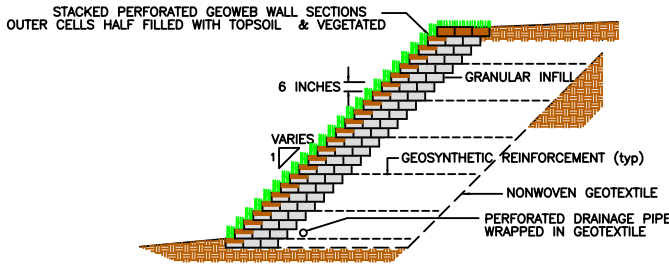
- INSTALL GEOSYNTHETIC REINFORCEMENT BETWEEN GEOWEB SECTIONS AT THE SPECIFIED ELEVATIONS. PLACE THE LEADING EDGE OF THE GEOSYNTHETIC AT THE FRONT FACE OF THE GEOWEB SECTION TO BE PLACED AND EXTEND THE SPECIFIED DISTANCE (I.E. LENGTH) OVER THE COMPACTED BACKFILL. ENSURE THAT THE GEOSYNTHETIC REINFORCEMENT IS PLACED WITH THE HIGH STRENGTH DIRECTION PERPENDICULAR TO THE WALL FACE.
- PLACE AND INFILL THE NEXT GEOWEB SECTION ON TOP OF THE GEOSYNTHETIC REINFORCEMENT.
- MANUALLY TENSION THE GEOSYNTHETIC AND HOLD TAUT (TEMPORARY STAKES OR OTHER METHOD) DURING PLACEMENT OF THE SPECIFIED BACKFILL SOIL.
- PLACE BACKFILL MATERIAL WITHIN REINFORCED SOIL ZONE IN 250 mm (10 in) LIFTS AND COMPACT TO A MINIMUM 95% OF SPDD. ENSURE THAT THE GEOSYNTHETIC REINFORCEMENT REMAINS TAUT AND IS NOT DISPLACED WHILE PLACING THE BACKFILL MATERIAL. THIS IS BEST ACCOMPLISHED BY PLACING THE BACKFILL AT THE BACK OF THE GEOWEB SECTIONS AND SPREADING TOWARD THE BACK OF THE REINFORCED SOIL ZONE. SHAPE AND COMPACT THE BACKFILL LEVEL WITH THE TOP OF THE GEOWEB SECTIONS PRIOR TO PLACING THE NEXT LAYER.
- PLACE AND COMPACT RETAINED SOILS (FILL SITUATIONS) BEHIND THE REINFORCED SOIL ZONE IN 250 mm (10 in) LIFTS AND COMPACT TO A MINIMUM 95% OF SPDD.



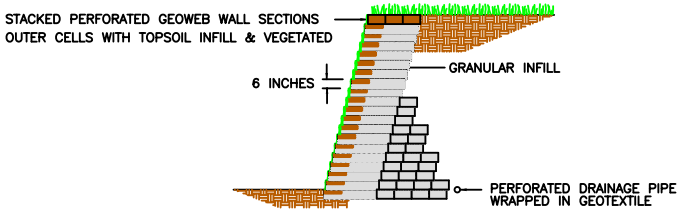
REINFORCED GEOWEB® RETAINING WALL



ROCK FACE PROTECTION – STACKED GEOWEB® FACIA



REINFORCED SLOPE – STACKED GEOWEB® FACIA



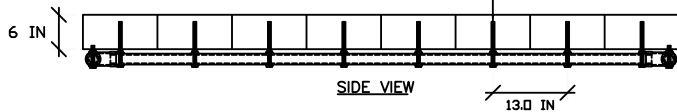
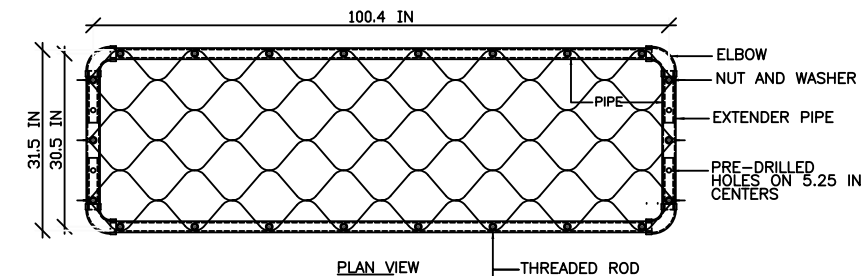
GRAVITY WALL



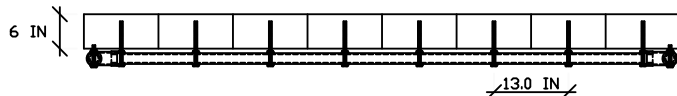
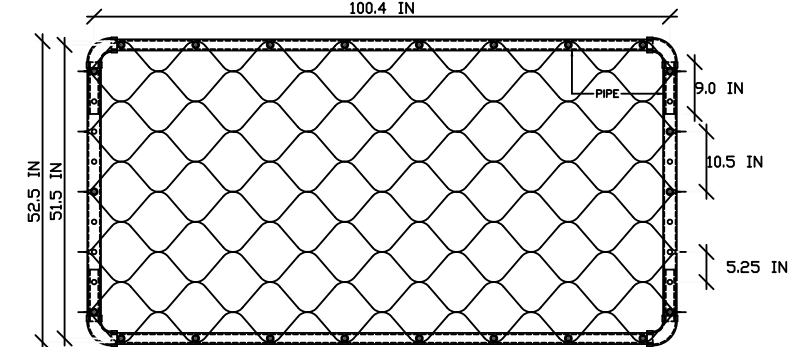
PRESTO® PRODUCTS CO.
670 NORTH PERKINS STREET
APPLETON, WI 54914
920-738-1342
WWW.PRESTOGEO.COM

THIS DRAWING IS COPYRIGHTED AND BASED UPON THE USE OF GENUINE GEOWEB MANUFACTURED BY PRESTO GEOSYSTEMS. ANY USE OF THIS DRAWING FOR ANY PRODUCT OTHER THAN THAT MANUFACTURED BY PRESTO GEOSYSTEMS IS STRICTLY PROHIBITED.

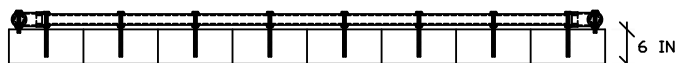
GENUINE GEOWEB® WALL CROSS SECTIONS		
PRESTO, GEOWEB, AND ATRA ARE REGISTERED TRADEMARKS® OF PRESTO PRODUCTS.		
DATE	APRIL 2010	FILE NAME GWRW1F.DWG
SCALE	NTS	SHEET 1 © 2010 PRESTO GEOSYSTEMS



TYPICAL STRETCHER FRAME
SET TO GW30V60803 SECTION SIZE
100.4 IN

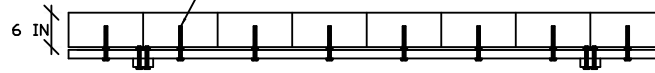
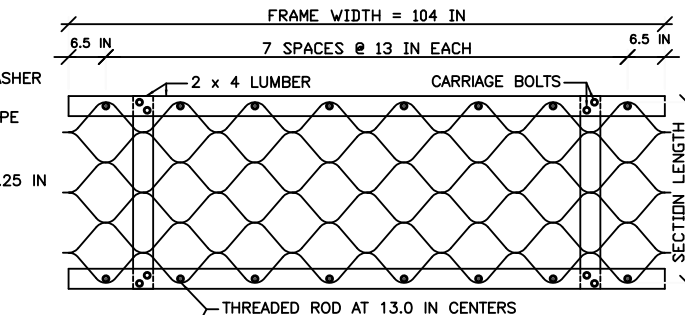


STRETCHER FRAME EXPANDED TO GW30V60805 SECTION SIZE
ILLUSTRATING GEOWEB SECTION IN PLACE



STRETCHER FRAME TURNED OVER AFTER GEOWEB SECTION PLACED

EXPANDABLE STRETCHER FRAME
WITH EXTENDER PIPES FOR GW30V60803 TO GW30V60806 SECTIONS

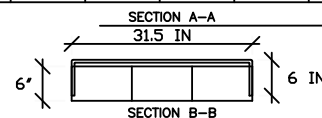
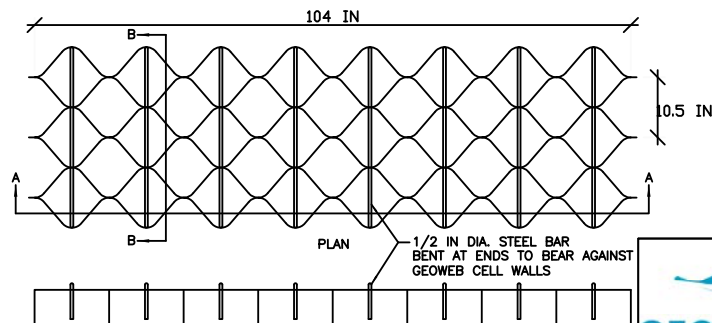


SIDE VIEW - UPSIDE DOWN FOR EXPANSION OF GEOWEB SECTION



SIDE VIEW - TURNED OVER FOR PLACEMENT OF GEOWEB SECTION

TYPICAL WOOD STRETCHER FRAME
FOR GW30V60803 SECTION SIZE



TEMPORARY STRETCHING METHOD FOR INSTALLATION
OF GW30V GEOWEB SECTIONS

TABLE 1
EXPANDED GEOWEB SECTION LENGTH

CELLS LONG	SECTION LENGTH (mm)	(in)
3	800	31.5
4	1067	42
5	1334	52.5
6	1600	63
7	1867	73.5

PARTS LIST - EXPANDABLE STRETCHER FRAME

- 16 - 1/2 IN X 7-1/2 IN THREADED ROD
- 32 - 1/2 IN NUTS WITH WASHERS
- 4 - 1/2 IN X 3-1/2 IN BOLTS
- 4 - 1/2 IN NUTS WITH WASHERS
- 4 - 2 IN ID ELBOWS
- 4 - 1-15/16 IN OD PIPE
- 2 - 2 IN ID EXTENDER PIPE

PIPE AND ELBOW DIMENSIONS ARE BASED ON STANDARD STEEL PIPE SIZES. DIMENSIONS MAY VARY SLIGHTLY FOR STRETCHER FRAMES FABRICATED WITH ALUMINUM OR PVC PIPE AND ELBOW COMPONENTS.

EXTENDER PIPE DIMENSIONS

- 3 TO 4 CELL LONG GW30V SECTIONS - 22.1 IN
- 5 TO 6 CELL LONG GW30V SECTIONS - 43.1 IN
- 7 CELL LONG GW30V SECTIONS - 53.6 IN

EXTENDER PIPE DIMENSIONS MAY VARY DEPENDING UPON ELBOW DIMENSIONS. CHECK ELBOW DIMENSIONS BEFORE DRILLING HOLES IN PIPE AND EXTENDER PIPE.

PARTS LIST - WOOD STRETCHER FRAME

- 16 - 7/16 IN X 7 IN CARRIAGE BOLTS
- 8 - 7/16 IN X 4 IN CARRIAGE BOLTS
- 24 - 7/16 IN FLAT WASHERS
- 24 - 7/16 IN HEX NUTS
- 2 - 2 X 4 X 10" LUMBER
- 2 - 2 X 4 X "XX" LUMBER

WHERE "XX" EQUALS:

- GW30V60803 35"
- GW30V60804 45"
- GW30V60805 56"
- GW30V60806 66.5"
- GW30V60807 77"

PARTS LIST - TEMPORARY STRETCHER BARS

- 8 - 1/2 IN X 43.5 IN STEEL BARS PER SECTION

THIS DRAWING IS COPYRIGHTED AND BASED UPON THE USE OF GENUINE GEOWEB MANUFACTURED BY PRESTO GEOSYSTEMS. ANY USE OF THIS DRAWING FOR ANY PRODUCT OTHER THAN THAT MANUFACTURED BY PRESTO GEOSYSTEMS IS STRICTLY PROHIBITED.

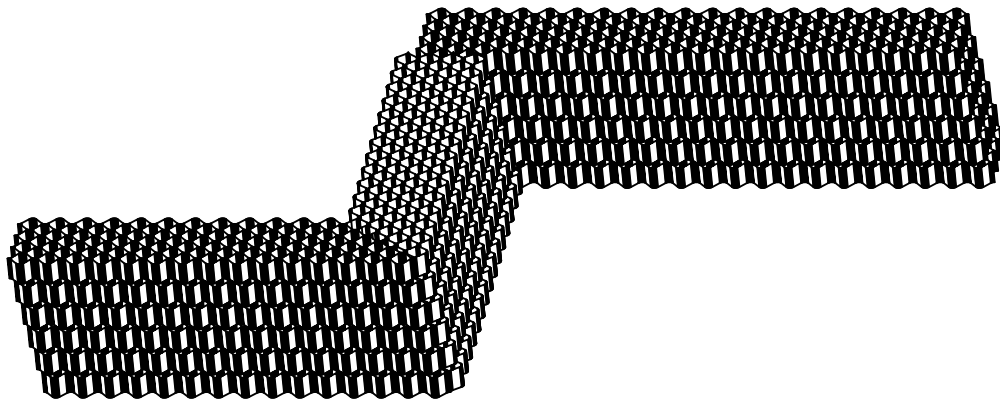


PRESTO PRODUCTS CO.
670 NORTH PERKINS STREET
APPLETON, WI 54914
920-738-1342
WWW.PRESTOGEOM.COM

GENUINE GEOWEB®
EARTH INSTALLATION TOOLS

PRESTO, GEOWEB, AND ATRA ARE REGISTERED TRADEMARKS OF PRESTO PRODUCTS.

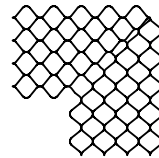
DATE	APRIL 2011	FILE NAME	GWRW6.DWG
SCALE	NTS	SHEET	1
		©	2010 PRESTO GEOSYSTEMS



PARTIAL ISOMETRIC OF INSIDE AND OUTSIDE CORNERS

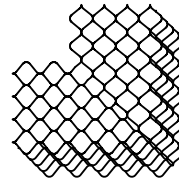


CUT AND REMOVE SECTION



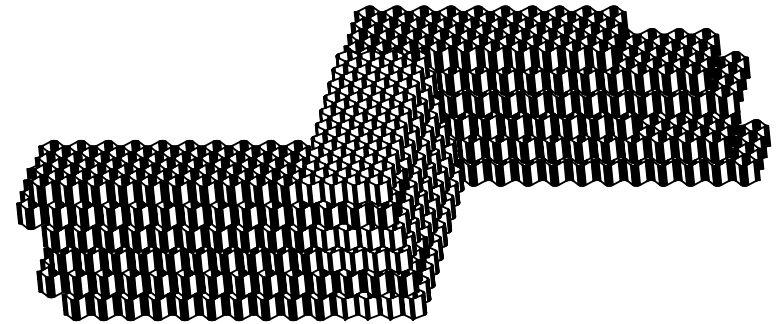
ALIGN CUT ENDS AND STAPLE

PLAN



STACK CORNER SECTIONS WITH
SPECIFIED SETBACK - BOTH DIRECTIONS

GEOWEB WALL OUTSIDE CORNER - SMOOTH FACE



PARTIAL ISOMETRIC OF INSIDE AND OUTSIDE CORNERS



NONWOVEN GEOTEXTILE

STACK STANDARD SECTIONS WITH
SPECIFIED SETBACK - BOTH DIRECTIONS
CUT GEOWEB SECTIONS, AS NECESSARY, TO FIT

PLAN

GEOWEB WALL OUTSIDE CORNER - BUTTED SECTIONS

PRESTO® PRODUCTS CO.
670 NORTH PERKINS STREET
APPLETON, WI 54914
920-738-1342
WWW.PRESTOGEOWEB.COM

THIS DRAWING IS COPYRIGHTED AND
BASED UPON THE USE OF GENUINE
GEOWEB MANUFACTURED BY PRESTO
GEOSYSTEMS. ANY USE OF THIS
DRAWING FOR ANY PRODUCT OTHER
THAN THAT MANUFACTURED BY
PRESTO GEOSYSTEMS IS STRICTLY
PROHIBITED.

GENUINE GEOWEB®
3-D CORNER DETAILS

PRESTO, GEOWEB, AND ATRA ARE REGISTERED TRADEMARKS OF
PRESTO PRODUCTS.

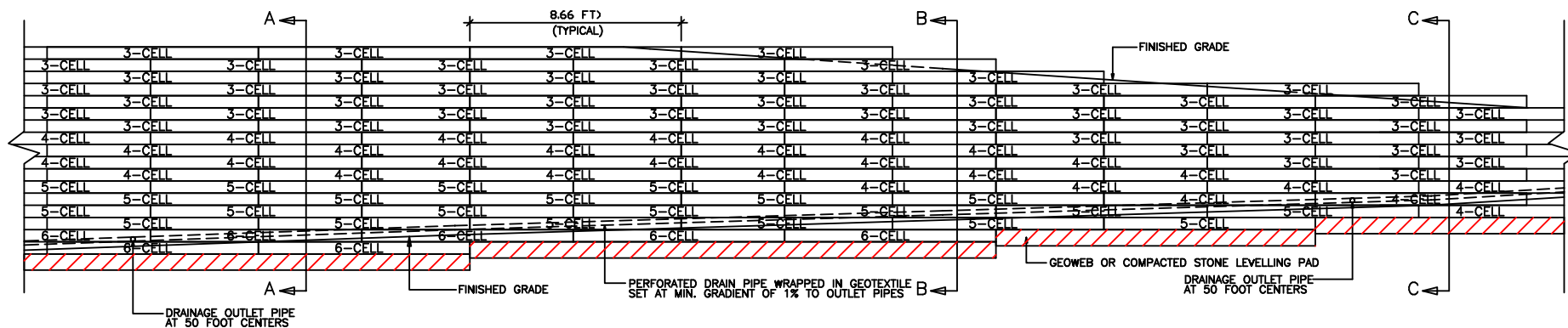
DATE APRIL 2010

FILE NAME GWRWSF.DWG

SCALE NTS

SHEET 1

© 2010 PRESTO GEOSYSTEMS

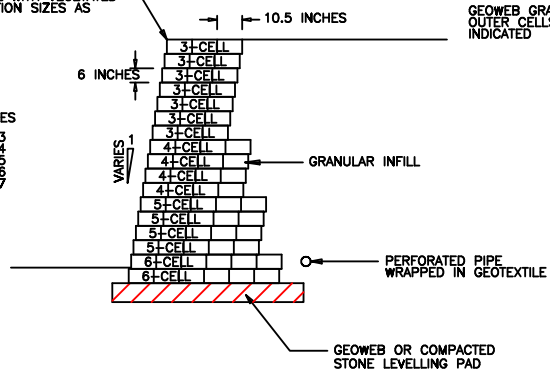


PROFILE OF TYPICAL GEOWEB® GRAVITY WALL

GEOWEB GRAVITY WALL WITH VEGETATED OUTER CELLS - SECTION SIZES AS INDICATED

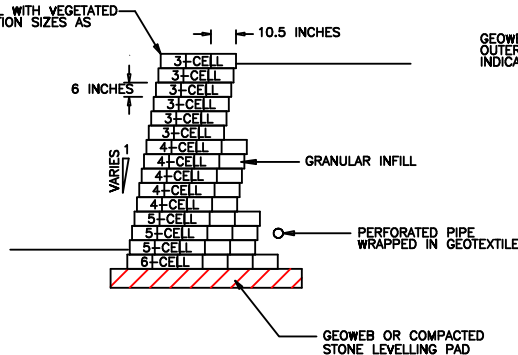
GEOWEB PRODUCT CODES

3-CELL - GW30V60803
4-CELL - GW30V60804
5-CELL - GW30V60805
6-CELL - GW30V60806
7-CELL - GW30V60807



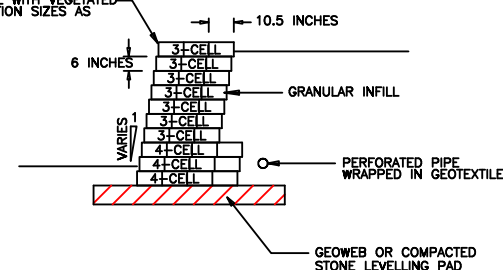
SECTION A-A

GEOWEB GRAVITY WALL WITH VEGETATED OUTER CELLS - SECTION SIZES AS INDICATED



SECTION B-B

GEOWEB GRAVITY WALL WITH VEGETATED OUTER CELLS - SECTION SIZES AS INDICATED



SECTION C-C

CROSS SECTIONS OF TYPICAL GEOWEB® GRAVITY WALL

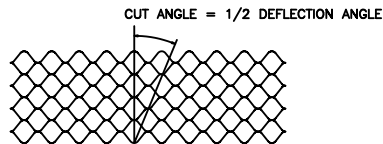
PRESTO® PRODUCTS CO.
670 NORTH PERKINS STREET
APPLETON, WI 54914
920-738-1342
WWW.PRESTOGEOWEB.COM

THIS DRAWING IS COPYRIGHTED AND BASED UPON THE USE OF GENUINE GEOWEB MANUFACTURED BY PRESTO GEOSYSTEMS. ANY USE OF THIS DRAWING FOR ANY PRODUCT OTHER THAN THAT MANUFACTURED BY PRESTO GEOSYSTEMS IS STRICTLY PROHIBITED.

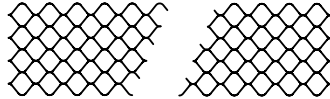
GENUINE GEOWEB®
GRAVITY WALL SECTIONS

PRESTO, GEOWEB, AND ATRA ARE REGISTERED TRADEMARKS® OF PRESTO PRODUCTS.

DATE	APRIL 2010	FILE NAME	GWRW44F.DWG
SCALE	NTS	SHEET	1
		© 2010 PRESTO GEOSYSTEMS	



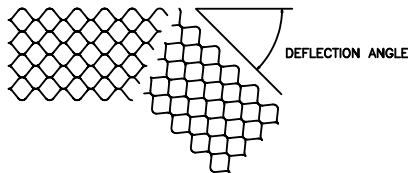
STEP 1 - DETERMINE CUT ANGLE



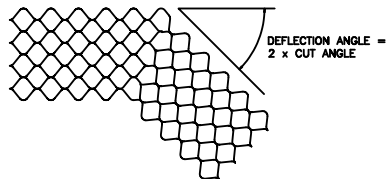
STEP 2 - CUT GEOWEB SECTION



STEP 3 - TURN ONE SECTION OVER

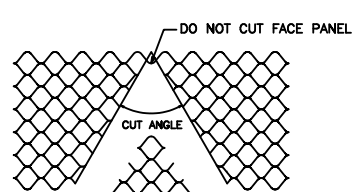


STEP 4 - ALIGN CUT ENDS

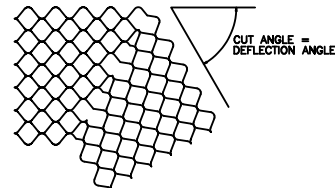


STEP 5 - STAPLE CUT ENDS

GEOWEB WALL BEND CUT DETAILS
STANDARD COLOR FACE - MINIMUM WASTAGE

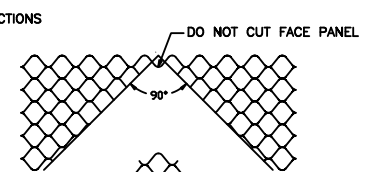
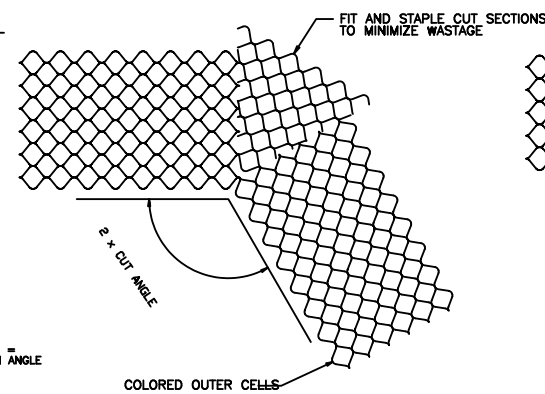


STEP 1 - CUT AND REMOVE SECTION

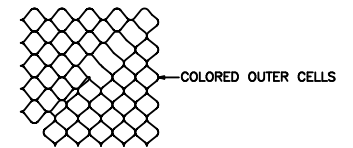


STEP 2 - ALIGN CUT ENDS AND STAPLE

INSIDE CORNER



STEP 1 - CUT AND REMOVE SECTION



STEP 2 - ALIGN CUT ENDS AND STAPLE

90 DEGREE OUTSIDE CORNER

GEOWEB WALL BEND CUT DETAILS - COLORED FRONT FACE

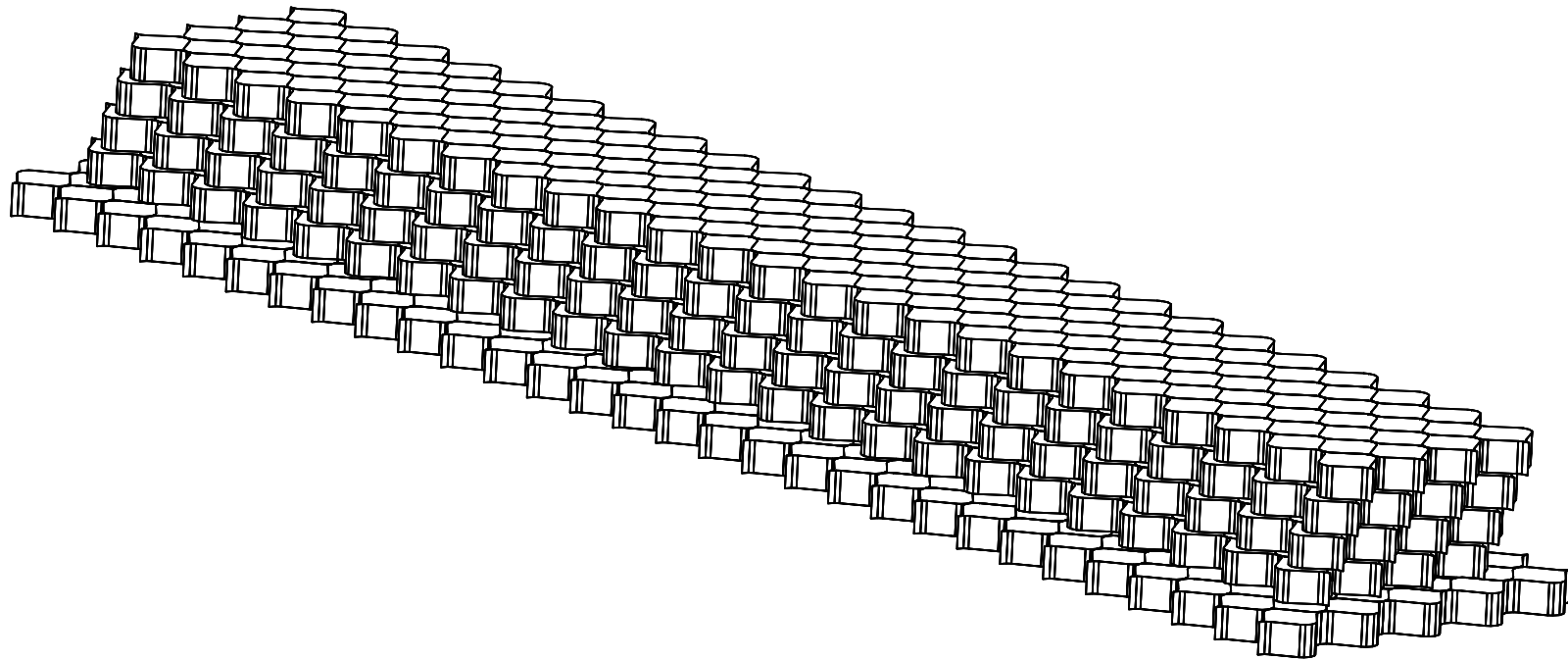
PRESTO® PRODUCTS CO.
670 NORTH PERKINS STREET
APPLETON, WI 54914
920-738-1342
WWW.PRESTOGEOWEB.COM

THIS DRAWING IS COPYRIGHTED AND BASED UPON THE USE OF GENUINE GEOWEB MANUFACTURED BY PRESTO GEOSYSTEMS. ANY USE OF THIS DRAWING FOR ANY PRODUCT OTHER THAN THAT MANUFACTURED BY PRESTO GEOSYSTEMS IS STRICTLY PROHIBITED.

GENUINE GEOWEB®
CORNER AND BEND DETAILS

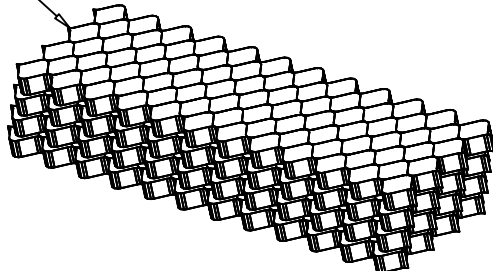
PRESTO, GEOWEB, AND ATRA ARE REGISTERED TRADEMARKS OF PRESTO PRODUCTS.

DATE	APRIL 2010	FILE NAME	GWRW3F.DWG
SCALE	NTS	SHEET	1
© 2010 PRESTO GEOSYSTEMS			



PARTIAL ISOMETRIC OF A GEOWEB® WALL ABOVE A FULL LENGTH, HALF WIDTH SPREAD FOOTING

GW30V60804 GEOWEB SECTIONS
(SECTION LENGTH VARIES BY DESIGN)



PARTIAL ISOMETRIC OF A GEOWEB® WALL

THIS DRAWING IS COPYRIGHTED AND BASED UPON THE USE OF GENUINE GEOWEB MANUFACTURED BY PRESTO GEOSYSTEMS. ANY USE OF THIS DRAWING FOR ANY PRODUCT OTHER THAN THAT MANUFACTURED BY PRESTO GEOSYSTEMS IS STRICTLY PROHIBITED.

PRESTO® PRODUCTS CO.
670 NORTH PERKINS STREET
APPLETON, WI 54914
920-738-1342
WWW.PRESTOGEO.COM

GENUINE GEOWEB® 3-D WALL DETAILS

PRESTO, GEOWEB, AND ATRA ARE REGISTERED TRADEMARKS® OF PRESTO PRODUCTS.

DATE	APRIL 2010	FILE NAME	GWRW2DF.DWG
SCALE	NTS	SHEET	1
© 2010 PRESTO GEOSYSTEMS			