

Solar Base Frame SGR 90/48 and SGR 90/72



Base frame made of Magnelis specially designed for the vertical use of bifacial modules; matched to the ZinCo Solar Base® SB 200.

Technical Data

Solar Base Frame SGR 90/48

Order No. 970095

Solar support frame made of Magnelis, matched to the ZinCo Solar Base® SB 200, for the vertical mounting of -preferably bifacial- PV modules. "48" in the product name means that the solar base frame is especially suitable for the installation of PV modules with 48 solar cells (=4 rows of 12 cells each).

Material:	Magnelis
Width:	ca. 500 mm
Height:	ca. 1.100 mm
Weight:	ca. 4 kg

Solar Base Frame SGR 90/72

Order No. 970096

as above, but especially suitable for mounting PV modules with 72 cells.

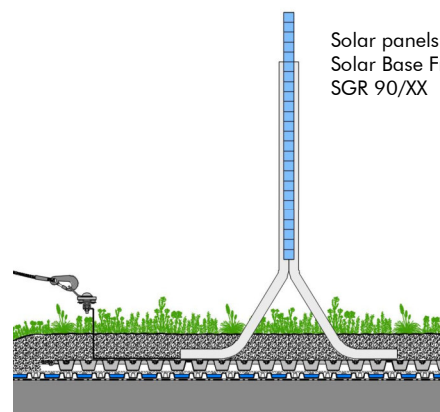
Width:	ca. 500 mm
Height:	ca. 1.500 mm
Weight:	ca. 6 kg

Features

- the vertical installation of the modules allows water and light to reach the vegetation
- prevents shading by plants or snow
- installation without penetrating the roof membrane
- easy to assemble without small parts needed
- matched to the ZinCo Solar Base® SB 200
- can be combined with the Fallnet® SB 200-Rail fall protection system (increased load may be required).
- low weight

Application Example

"System Build-up SolarVert® with vertically installed solar panels"



Solar panels on Solar Base Frame SGR 90/XX

Bifacial solar panels
Solar Base Frame SGR 90/XX
Plant layer "Sedum Carpet"
System Substrate "Sedum Carpet"
ZinCo Solar Base® SB 200, with infill
Fixodrain® XD 20

Specification Suggestion

Support frame made of Magnelis for vertical mounting of PV /solar systems, width approx. 500 mm, height approx. 1.100 / 1.500 mm. Supply and installation to the ZinCo Solar Base® SB 200.

Make: ZinCo Solar Base Frame SGR 90/48 or SGR 90/72 (please delete where not applicable)
Enquiries: ZinCo GmbH,
Phone: +49 7022 6003-0